

Fender Musical Instruments Corporation

LOG-NET 7 VERSUS LOG-NET 6.5 (CURRENT VERSION)

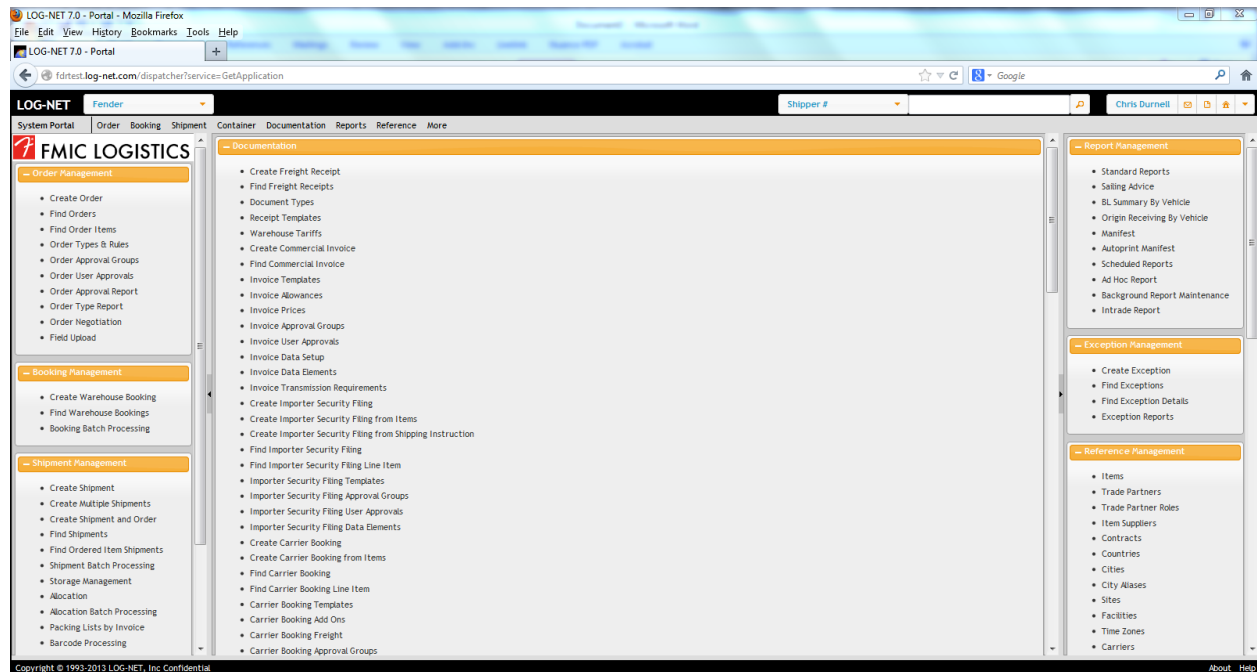
Fender is announcing that you will soon see improvements in LOG-NET. We are upgrading to a new version, LOG-NET 7, which has many new capabilities. For data entry and how the actual screens behave, there are no major changes. However, in the future Fender will be making some improvements to LOG-NET that will make it more efficient for you to use.

Please start taking a look and getting familiar with the new look and feel. The major changes include:

- Appearances
- Headers
- Settings Toolbar
- Function Screens
- Themes
- Tab View
- Portal Messages
- Wiki

APPEARANCES

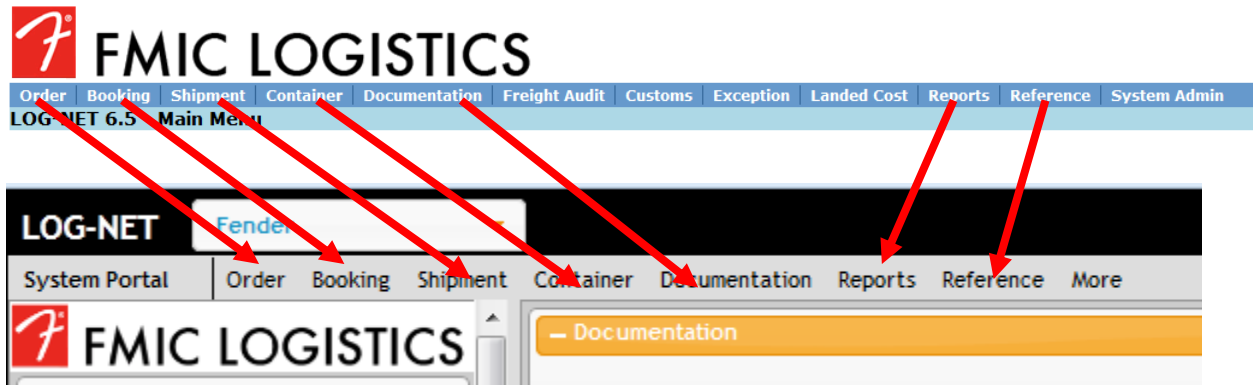
Before going into the new features, let's begin with some obvious changes. As you can see, the look is very different at first. However, the different appearance is very superficial. All the same functions still work in LOG-NET 7 and you should soon adjust to any changes in appearance.



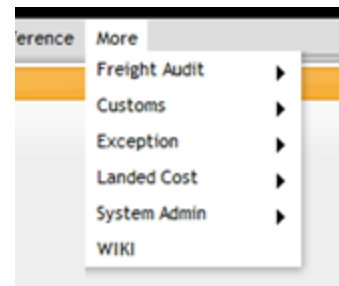
HEADERS

Fender Musical Instruments Corporation

Let's look at the Headers. We see that the same headers exist in both versions.



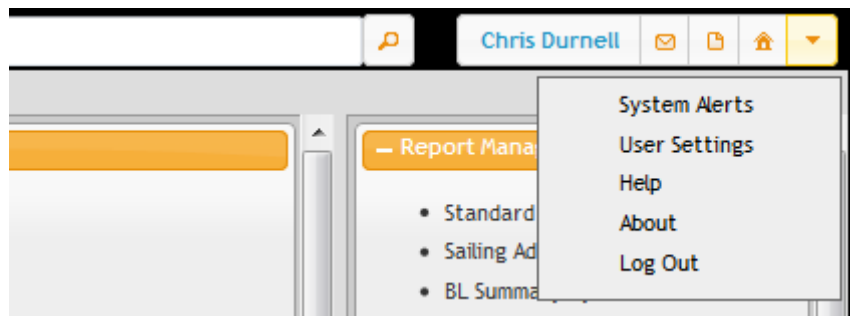
The **More** tab includes the tabs for Freight Audit, Customs, Exception, Landed Cost, System Admin, and a link to the WIKI. These tabs are not used by Fender vendors traditionally, so their absence on the main header should not affect our suppliers' use of LOG-NET.



SETTINGS TOOLBAR

To the far right are your Settings. It will display the name associated with your UserID. For those vendors who have multiple people using the same UserID, it will display the name of the main contact for your company. You will see several sections

- **Messaging** (letter icon)
- **Reports** (document icon)
- **Home** (house icon)
- **Drop Down** (chevron icon) that includes your User Settings as well as System Alerts, Help, About, and Log Out.



MESSAGING

The new messaging function is basically the ability to email another UserID in LOG-NET. While you may see some advantage to this, Fender recommends you still communicate with us on LOG-NET issues by emailing lognet@fender.com. Multiple people receive and monitor this every day, so if even if someone is on holiday or has left the company, you can continue to use one address and be confident your email will be answered.

Fender Musical Instruments Corporation

REPORTS

Currently, Fender has not created any reports to assist our vendors. If that ever changes in the future, then you could access them here as opposed to the Reports header.

HOME

Home takes you back to the default interface you see when you first logged in. You will find this useful if you have finished a task in LOG-NET and wish to start another one fresh.

DROP DOWN

The Drop Down menu has some basic information, including the Log Out function. A major convenience here is the presence of your User Settings, although this can still be accessed by the System Admin header as well. Since the User Settings was the only feature used by our vendors in System Admin, this gives you a more convenient way to access it.

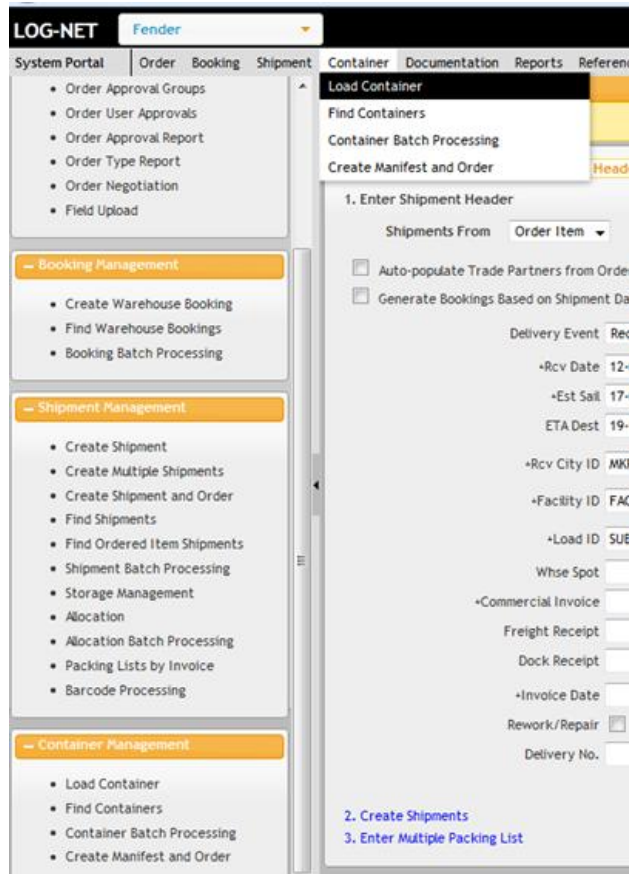
FUNCTION SCREENS

The difference in appearance is carried throughout the different sections of LOG-NET. However, the fields needed to enter will remain the same. As you can see below, if you select one of the functions (in this case, Create Multiple Shipments) you see the same screen that you used in LOG-NET 6.5 except that to your left and right, you continue to see some of the portlets that allow you to select a new function.

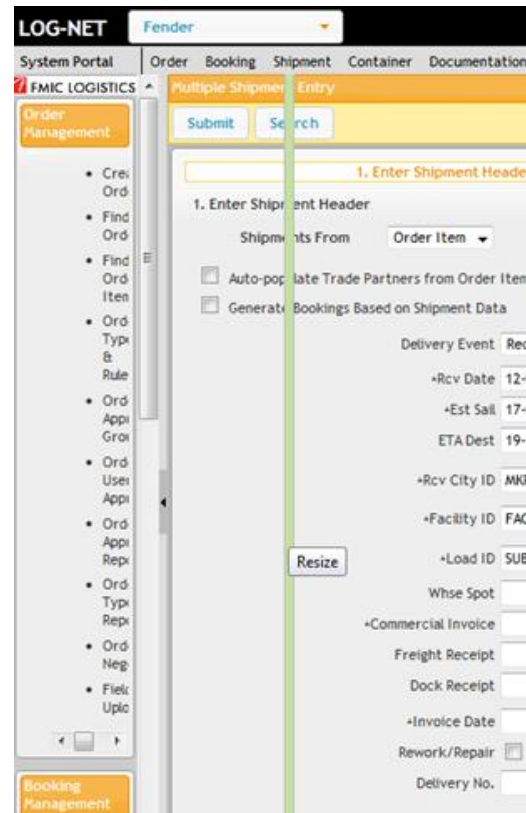
MARGINS

Some users might enjoy having these portlets at the margins, but others might feel they are in the way. If so, you are able to adjust the margins so that you only see the main screen.

Fender Musical Instruments Corporation



The only major change is that to the left and right of the main screen are the header and section information making it more convenient to go to a new function of LOG-NET. As you can see the sections in the margin contain the same functions as the drop down menu from the header.



If you do not want to see the margin while you work, you have the option to Resize it by clicking on the divider bar and moving it left or right.

Or by double clicking on the black chevron, you can hide the margin completely. You can choose to collapse the right margin, the left margin, or both margins. The choice is yours. You can then choose to expand/unhide the margins by double clicking on the black chevron again.



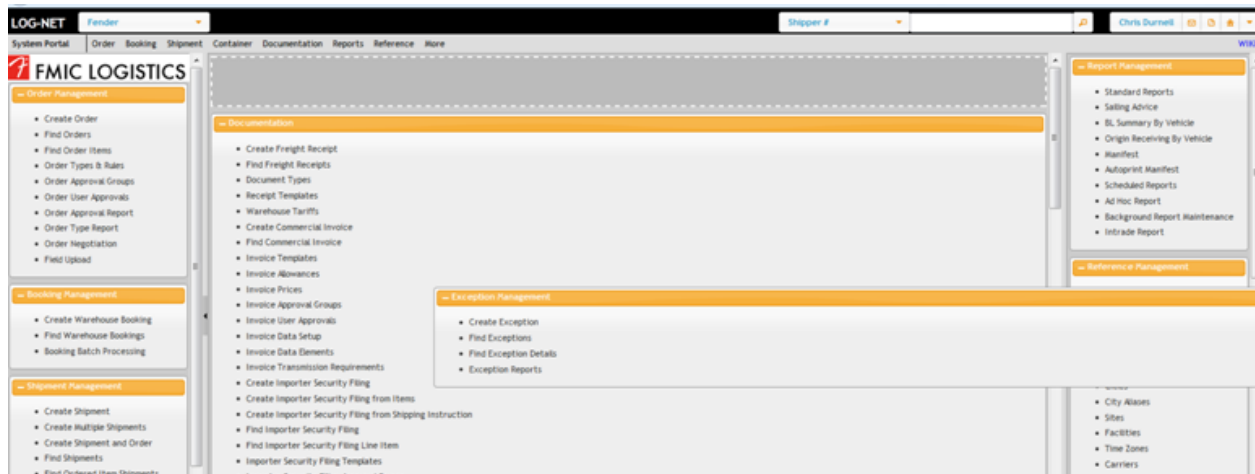
Here is what it looks like without both margins.

Fender Musical Instruments Corporation

The screenshot shows the 'Multiple Shipment Entry' form in the LOG-NET system for Fender. The form is divided into three main sections: 1. Enter Shipment Header, 2. Create Shipments, and 3. Enter Multiple Packing List. Section 1 includes fields for Shipments From, Order Item, Delivery Event (Receipt), Rcv Date (12-09-2012), Est Sal (17-09-2012), ETA Dest (19-10-2012), Rcv City ID (MGR), Facility ID (FAC1), Load ID (SUB), Whse Spot, Commercial Invoice, Freight Receipt, Dock Receipt, Invoice Date, Rework/Repair, and Delivery No. Section 2 includes fields for Est Load (17-09-2012), Est Disch (16-10-2012), Site ID (30018ND), Facility Type (CY), Disch ID (LAX), Sample Ctn, Freight Receipt Date, Intrade Number, Delivery Type, Delivery Line, and Packaging (CARTONS). Section 3 is currently empty. The bottom of the form shows copyright information: Copyright © 1992-2013 LOG-NET, Inc. Confidential.

DRAG AND DROP PORTLETS

Portlets are the boxes containing links to the Header functions on the main page. Instead of selecting the function from the Header menu, you can click on the links directly from the Portlet. You are also able to customize the appearance of your main page by moving individual Portlets to a different location. You just click on the top yellow bar and then drag it to the location you want.



THEMES

Themes do not affect any functions in LOG-NET. However, Themes allow the user to adjust their User Settings so that LOG-NET displays differently. Go to User Settings and select Themes. You are given various color combinations to choose from.

Fender Musical Instruments Corporation



TAB VIEW

The default look of LOG-NET 7 is the same as in the previous version of LOG-NET. This is called the LOG-NET “Classic” view. However, you can also choose to view LOG-NET in “Tab” view. The only difference between the two is how individual Sections of a page are accessed.

In Classic view, the individual Sections of a page are viewed by scrolling up and down. Below is a screenshot of the Shipment Maintenance page with Sections in Classic View.

Shipment Maintenance - Shipment FDRFDR0000142417

Submit New Delete Split Print Screen Search Message

micotermis Desc
Sched Start
Due Date

micotermis Desc
Sched End

+Quantity +Qual Cartons CBM KGS
1.000 GA 1 0.000 0.000

Events

	Event Start Date	Event Code	Status	Event Location	Event Location Name	Additional Details	
Edit	14-04-2011	RCV	Origin Receipt	SAN	SAN DIEGO	Forwarder/Consolidator Receipt	Delete
Edit	19-04-2011	TRL	Truck Loaded	SAN	SAN DIEGO	Trl EXPENSE, PRO 172-2011	Delete

Add New Show Filter Export

1 1 to 2 of 2

Costs

Charge Reference ID	Charge ID	Description	Amount	Unit Cost	Cost Per CBM	Cost Per KGS
---------------------	-----------	-------------	--------	-----------	--------------	--------------

In Tab view, the individual Sections do not appear by scrolling up and down. Instead, the sections appear as Tabs at the top of the page. To access a Section, you must click on the “tab” showing that section. You can then view, enter, or edit data as needed. Below is a screenshot of the same Shipment Maintenance page with Sections in Tab View. Currently the Properties tab is selected; to view another Section, you would need to click on that Tab, such as “Events”.

Fender Musical Instruments Corporation

Shipment Maintenance - Shipment FDRFDR0000142417

Submit New Delete Split Print Screen Search Message

Properties Events Costs Trade Partners Comments Packing List Documents Exception Details Milestones Descriptions Marks Location Changes

Allocation Orders Allocation Items Allocation Shipments Current Allocation Shipments Contributing Orders Contributing Items Contributing Shipments

Properties

Shipment Reference FDRFDR0000142417
PO 164443
Material Number 0069158000
Order Key FDRFDR0000023360

Ordered Item Shipments
PO Line 00010
Description PATERN FLO LGR 51AM

There are no differences in terms of what you can or cannot do between Classic and Tab views. Instead, some users might feel one or the other works better for them when entering data.

You can switch between the Classic and Tab views by clicking on the Wrench icon at the top of the page.

Shipment Maintenance - Shipment FDRFDR0000142417

Submit New Delete Split Print Screen Search Message

Properties Events Costs Trade Partners Comments Packing List Documents Exception Details Milestones Descriptions Marks Location Changes

Allocation Orders Allocation Items Allocation Shipments Current Allocation Shipments Contributing Orders Contributing Items Contributing Shipments

Properties

Shipment Reference FDRFDR0000142417
PO 164443
Material Number 0069158000

Ordered Item Shipments
PO Line 00010

Or if you want to make a particular view permanent for all aspects of LOG-NET, you can go to User Settings and change the Default Screen Format. The default view is Classic. If you want Tab, simply use the drop down menu to select Tab and then hit Submit to save your changes.

User Settings

Submit

Properties Report Settings

Properties

Theme Switch Theme

User ID cdurnell

Language English

Country United States

Date Format dd-mm-yyyy

Time Format for Standalone Times HH:mm:ss

Use 24-Hour Clock for Times in Date Fields ☐

Max Rows Returned From Searches 9000

Rapid Data Entry Mode OFF

Unit of Measure METRIC

Minimize criteria after search ☒

Hide extended criteria after search ☒

Default Screen Format Classic View

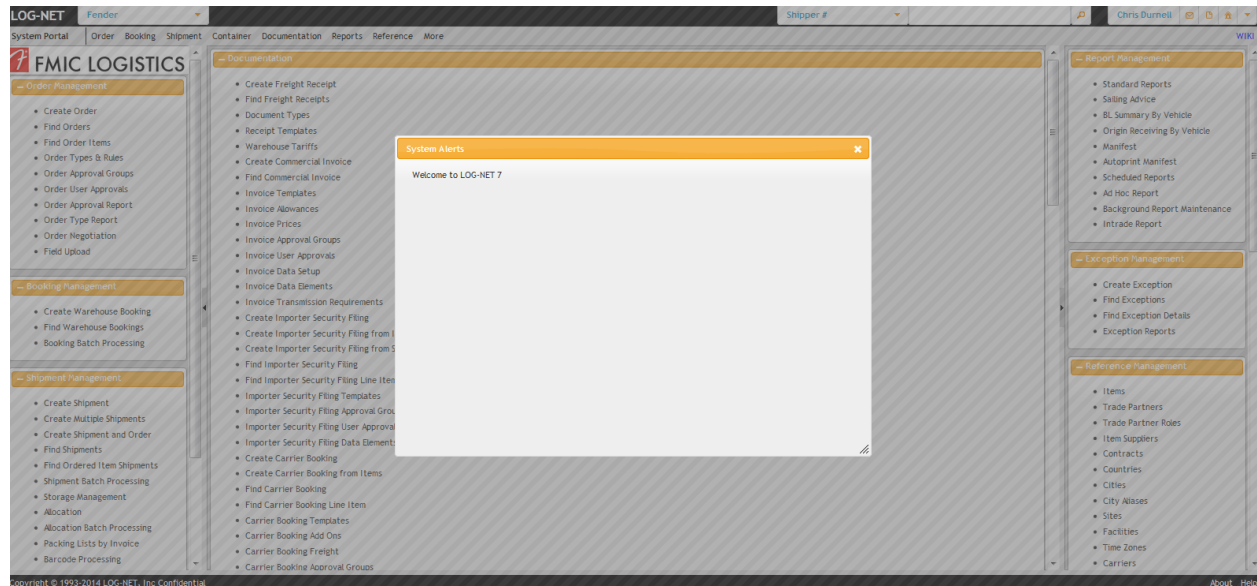
Change Password Classic View
Tab View

PORTAL MESSAGES

LOG-NET 7 allows Fender to give users messages or updates when they first login. A Portal Message is a pop up window containing a written message from Fender. Portal Messages will be the preferred method of notifying users of changes in LOG-NET, new functionality, or new requirements.

An example of a Portal Message is below.

Fender Musical Instruments Corporation



If you get a Portal Message, you need to close the pop up before you can use LOG-NET. Please click on the white X at the upper right corner to close the pop up and continue.

WIKI

The Wiki section is reserved for a Fender LOG-NET encyclopedia. In the beginning, the Wiki section will not have information. However, Fender intends to migrate the information currently contained in the Fender LOG-NET Guides page to the Wiki.

NEW FEATURES

In addition to these changes, LOG-NET 7 will allow Fender to make additional changes to functionality to make data entry easier for our suppliers and create new capabilities. As these are implemented, we will notify our suppliers.